

NOTE NO. 3 - May 27 1986

ANALYSIS OF ANTIDEPRESSANTS

Analytes: Trimipramine (89 ng/ml), Amitriptyline (116 ng/ml), Imipramine (106 ng/ml)

Sample Matrix: Human serum

Sample Size: 200 microliters

Column: Receiving direct injection: 5 micron GFF ISRP, 5 cm x 4.6 mm ID

Regis Product Number: 731450

Receiving concentrate: 5 micron cyano, 25 cm x 4.6 mm ID

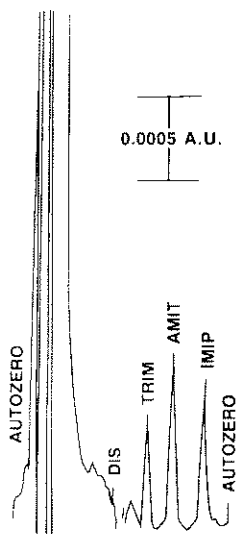
Mobile Phase: ISRP: 100% water, free of trace organics

ISRP + cyano: 85% methanol, 0.01 M KH_2PO_4 (pH 6.0)

Procedure: Sample injected onto ISRP column, which retains drugs while flow is continued for 8 minutes and the serum-containing effluent is sent to waste. The ISRP column is then switched in-line with the cyano column; and drugs are eluted from the ISRP column, separated by the cyano column, and detected.

Pump 1 (ISRP alone): Waters 590 Programmable Solvent Delivery System with control of Waters Automatic Valve Station

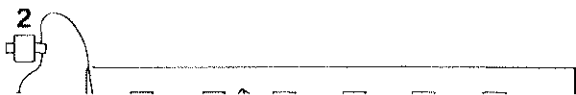
Pump 2 (ISRP + cyano): Milton Roy Single Piston



Detection: 254 nm, 0.005 AUFS

Flow Rate: ISRP column; 3 ml/min

cyano column, 1 ml/min



**S.E. Cook and T.C. Pinkerton, Department of Chemistry,
Purdue University, West Lafayette, Indiana 47907**