

NOTE NO. 16 - September 15 1986

COMPARISON OF DRUG ANALYSIS IN HUMAN PLASMA VS HUMAN SERUM

Analytes: Phenobarbital (80 µg/ml), Carbamazepine (30 µg/ml)

Sample Matrix: Plasma and serum (human)

Sample Size: 10 microliters

Column: 5 micron GFF ISRP, 15 cm x 4.6 mm ID

Regis Product Number: 731451

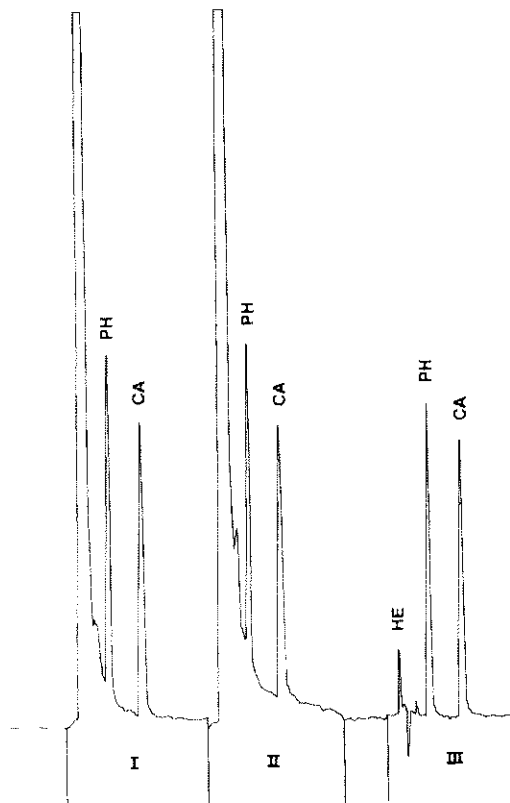
Mobile Phase: 80% 0.1 M KH_2PO_4 (pH 6.8), 20% Acetonitrile

Results: Graph #I: Analysis of drugs in human plasma

Graph #II: Analysis of drugs in human serum

Graph #III: Analysis of drugs in buffer spiked with Heparin (100 units/ml)

Conclusions: These analyses of drugs in either human plasma (all plasma samples contain Heparin) or human serum show similar results. Heparin, which is not retained at all and thus is eluted immediately, does not interfere with the separation or detection of the eluting drugs.



Detection: 254 nm, 0.04 AUFS

Flow Rate: 1.0 ml/min

Note: Sample filtered through 0.2 µm membrane prior to direct injection

J.D. Rateike and L.J. Glunz, Regis Chemical Company,
8210 Austin Avenue, Morton Grove, IL 60053