

NOTE NO. 15 - Sept 15 1986

**DETERMINATION OF CEFPIRAMIDE\***

**Analytes:** Cefpiramide (25 µg/ml)

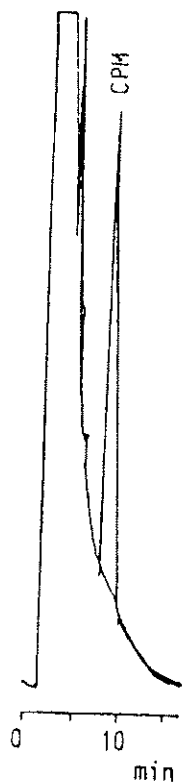
**Sample Matrix:** Human plasma

**Sample Size:** 10 microliters

**Column:** 5 micron GFF ISRP, 25 cm x 4.6 mm ID

**Regis Product Number:** 731452

**Mobile Phase:** 98% 0.1 M  $\text{KH}_2\text{PO}_4$  (pH 6.8), 2% Isopropanol  
(HPLC grade reagents)



**Detection:** 273 nm, 0.008 AUFS

**Flow Rate:** 1.0 ml/min

**Note:** Sample filtered through 0.2 µm membrane prior to direct injection

T. Ohshima, I. Johno and S. Kitazawa, Dept. of Hospital Pharmacy School of Medicine,  
Nagoya University, 65 Tsurumai-cho, Showa-ku, Nagoya, Japan

\*Contact Nagoya University for further information