

NOTE NO. 1 - May 7 1986

SEPARATION OF ANTICONVULSANTS

Analytes: Theophylline (29 $\mu\text{g/ml}$), Phenobarbital (57 $\mu\text{g/ml}$), Carbamazepine (15 $\mu\text{g/ml}$), Phenytoin (26 $\mu\text{g/ml}$)

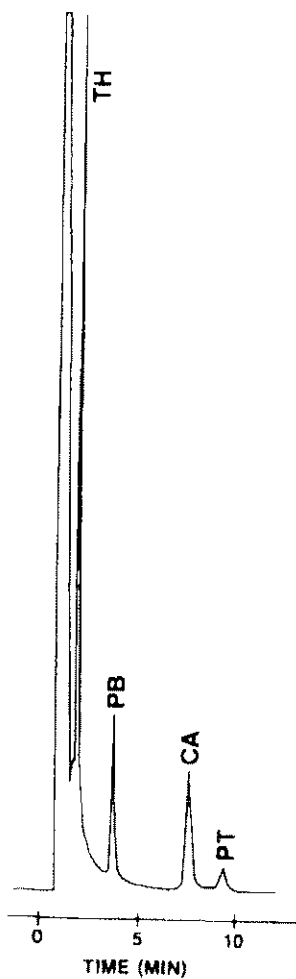
Sample Matrix: Human serum

Sample Size: 10 microliters

Column: 5 micron GFF ISRP, 15 cm x 4.6 mm ID

Regis Product Number: 731451

Mobile Phase: 84% 0.1 M KH_2PO_4 (pH 6.8), 10% Isopropanol, 6% Tetrahydrofuran (HPLC grade reagents)



Detection: 254 nm, 0.08 AUFS

Flow Rate: 1 ml/min

Note: Sample filtered through 0.2 μm membrane prior to direct injection