

NOTE NO. 11 - July 1 1986

## SEPARATION OF BARBITURATES

**Analytes:** Barbital (5 µg/ml), Butabarbital (5 µg/ml), Phenobarbital (5 µg/ml), Amobarbital (5 µg/ml), Pentobarbital (5 µg/ml), Secobarbital (5 µg/ml)

**Sample Matrix:** Human serum

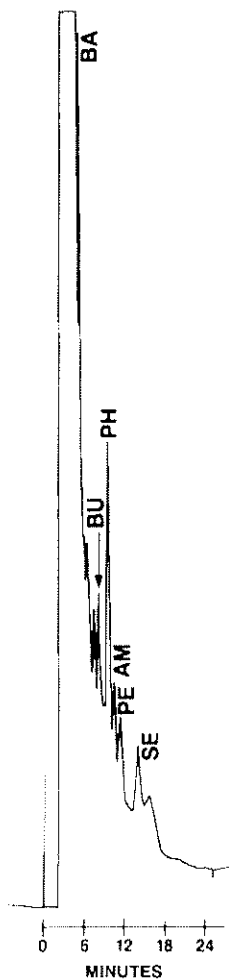
**Sample Size:** 10 microliters

**Column:** 5 micron GFF ISRP, 25 cm x 4.6 mm ID

**Regis Product Number:** 731452

**Mobile Phase:** 95% 0.1 M  $\text{KH}_2\text{PO}_4$  (pH 7.5), 5% Methanol

(HPLC grade reagents)



**Detection:** 254 nm, 0.01 AUFS

**Flow Rate:** 0.8 ml/min

**Note:** Sample filtered through 0.2 µm membrane prior to direct injection

J.D. Rateike, Regis Chemical Company,  
8210 Austin Avenue, Morton Grove, IL 60053