

NOTE NO. 5 - May 21 1986

SEPARATION OF THEOPHYLLINE FROM ACETAMINOPHEN AND CAFFEINE

Analytes: Theophylline (10 µg/ml), Acetaminophen (10 µg/ml), Caffeine (10 µg/ml)

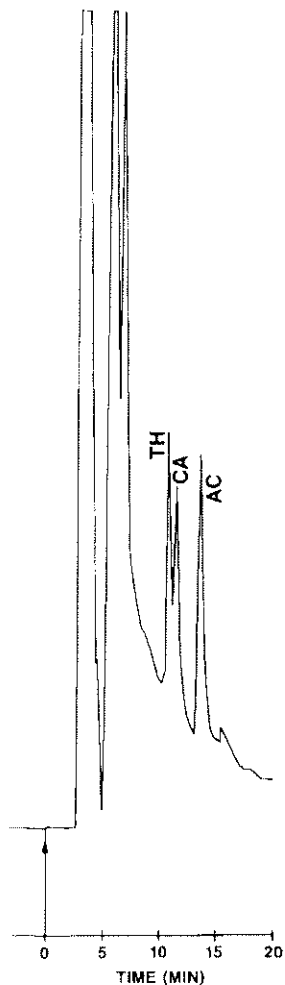
Sample Matrix: Human serum

Sample Size: 10 microliters

Column: 5 micron GFF ISRP, 25 cm x 4.6 mm ID

Regis Product Number: 731452

Mobile Phase: Water (HPLC grade)



Detection: 254 nm, 0.04 AUFS

Flow Rate: 0.6 ml/min

Note: Sample filtered through 0.2 µm
membrane prior to direct injection