

NOTE NO. 6 - May 28 1986

**SEPARATION OF THEOPHYLLINE FROM ACETAMINOPHEN**

**Analytes:** Theophylline (10 µg/ml), Acetaminophen (10 µg/ml)

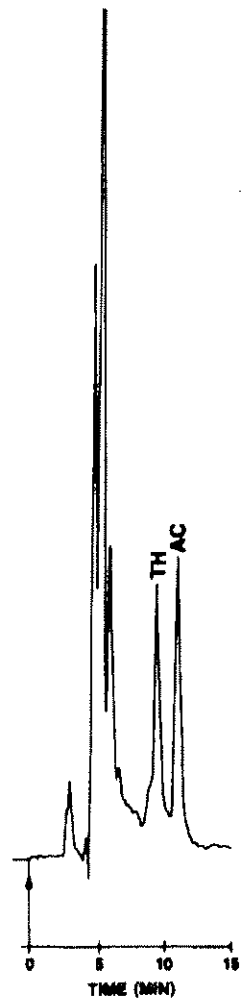
**Sample Matrix:** Human serum

**Sample Size:** 10 microliters

**Column:** 5 micron GFF ISRP, 25 cm x 4.6 mm ID

**Regis Product Number:** 731452

**Mobile Phase:** Water (HPLC grade)



**Detection:** 254 nm, 0.04 AUFS

**Flow Rate:** 0.6 ml/min

**Note:** Sample filtered through 0.2 µm membrane prior to direct injection

**J.A. Perry and J.D. Rateike, Regis Chemical Company,  
8210 Austin Avenue, Morton Grove, IL 60053**