

NOTE NO. 23 - July 17 1987

THERAPEUTIC RANGE DETERMINATION OF TRAZODONE

Analytes: Trazodone (10 ng/ml)

Sample Matrix: Human serum

Sample Size: 100 microliters

Concentrator column: 5 micron GFF ISRP guard column, 1 cm x 3.0 mm ID

Regis Product Number: 731440

Analytical column: 5 micron GFF ISRP, 15 cm x 4.6 mm ID

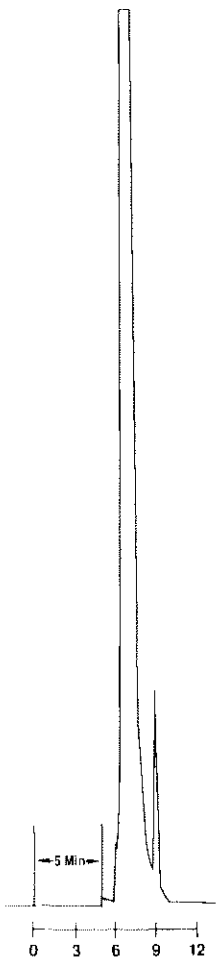
Regis Product Number: 731451

Mobile Phase: Concentrator column: 100% Water

Analytical column: 90% Methanol, 10% Water

(HPLC grade reagents)

Procedure: Refer to Application Note Nos. 14 and 14a for procedure and system setup.



Detection: 254 nm, 0.002 AUFS

Flow Rate: Concentrator: 1.0 ml/min

Analytical: 1.0 ml/min

Note: Sample filtered through 0.2 um
membrane prior to direct injection

**T.J. Szczerba, Regis Chemical Company,
8210 Austin Avenue, Morton Grove, IL 60053**