



# CHIRAL Stationary Phases

Depend on innovative columns from the experts in chiral chromatography.



## PACKED COLUMNS AND BULK MEDIA

Compatible with SFC & HPLC  
Scale from Analytical to Prep  
Robust Phases for Long Life

# WHELK-O<sup>®</sup> 1

1-(3,5-dinitrobenzamido)-1,2,3,4-tetrahydrophenanthrene

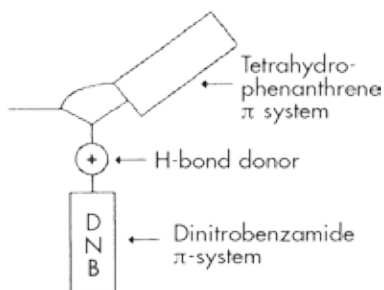
## The Original Immobilized Phase

- Excellent method development column with applicability to a wide range of compound classes
- Alternate selectivity to polysaccharide chiral stationary phases
- Covalently bonded for long term performance and broad mobile phase compatibility
- Broad range of particle sizes and dimensions for analytical to preparative scale separations
- High loading capacity for excellent scalability in preparative applications
- Choice of enantiomeric phases allows inversion of peak elution order

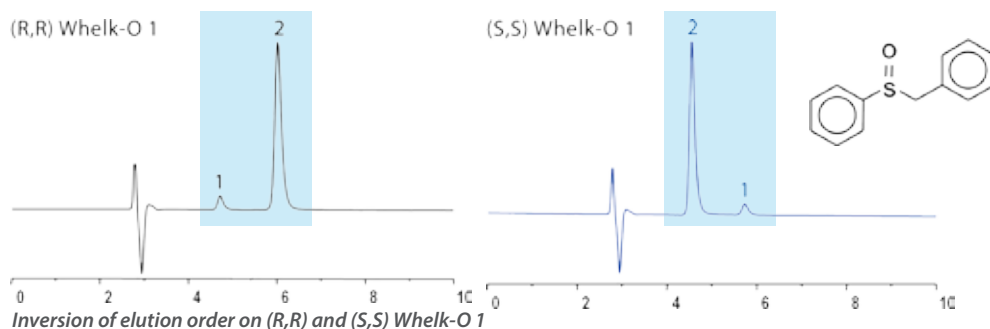


## Chemistry

General purpose Pirkle-type chiral phase designed to achieve selectivity through pi-pi interactions, dipole moment, hydrogen bonding interactions, and additional selectivity based on structure. Fully endcapped and bonded to high purity silica. Covalent bonding makes it compatible with all commonly used mobile phases, including aqueous systems. This column can be used in both normal phase and reversed phase with minimal equilibration times when switching between the two modes.



Key functional groups of the Whelk-O 1 involved in chiral recognition



## OTHER PIRKLE-TYPE PHASES AVAILABLE

Alpha Burke 2

DACH-DNB

Leucine

Phenylglycine

Pirkle 1-J

$\beta$ -Gem 1

ULMO

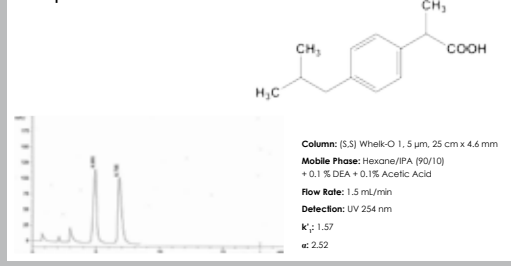
Whelk-O 2

## Applications

- Chiral Screening
- Quality Control & Quality Assurance
- Chiral Purifications in Drug Discovery & Development
- Agricultural & Food Safety
- And many others

Visit [registech.com/chiral-applications](http://registech.com/chiral-applications) for hundreds of applications on all Regis phases.

## Ibuprofen



# REGISPACK™

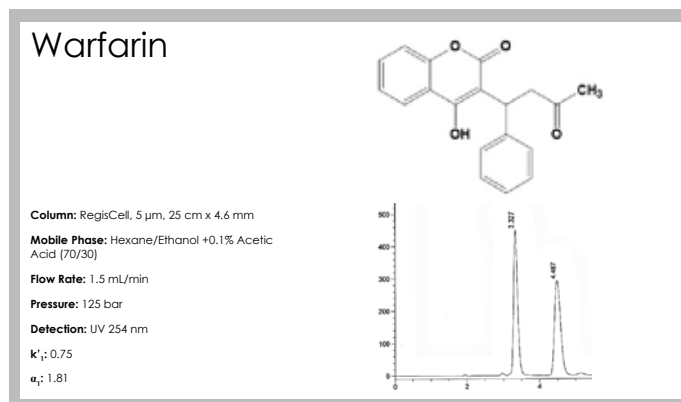
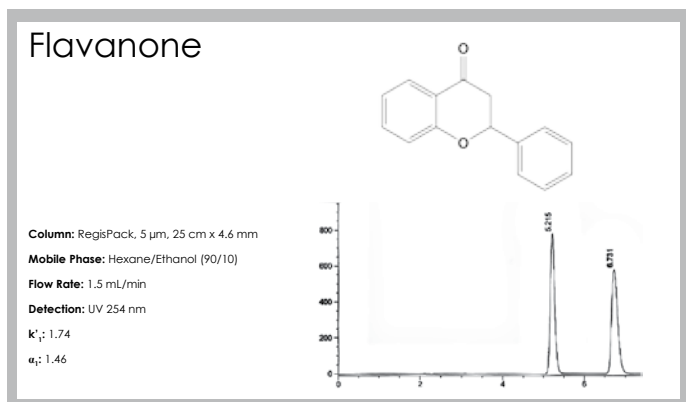
USP L51

tris-(3,5-dimethylphenyl) carbamoyl amylose

# REGISCELL™

USP L40

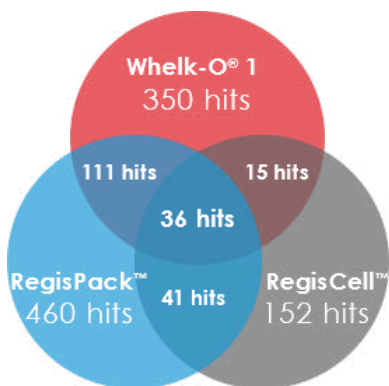
tris-(3,5-dimethylphenyl) carbamoyl cellulose



- Polysaccharide chiral columns with broad applicability for the separation of enantiomers
- High pressure limit (450 bar) allows faster runs and equilibration times
- Compatible with normal phase, reversed phase, and SFC conditions\*

\*Consult the Regis Care & Use Guides for full details on solvent recommendations.

## METHOD DEVELOPMENT KITS



Separate more than 75% of all chiral compounds with just three columns: Whelk-O<sup>®</sup> 1, RegisPack™, and RegisCell™.

Request the application note today to learn more.

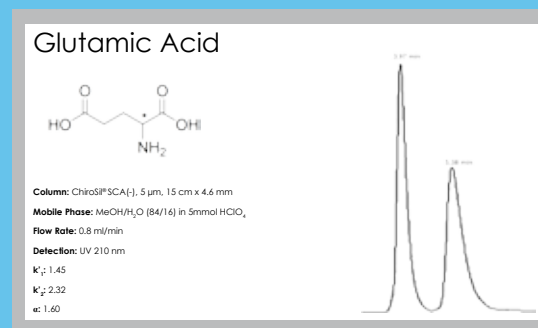
DIMENSIONS	PARTICLE SIZE	CATALOG #
5 cm x 4.6 mm	3.5* & 3 $\mu$ m	1-790103-300
10 cm x 4.6 mm	3.5* & 3 $\mu$ m	1-790111-300
15 cm x 4.6 mm	3.5* & 3 $\mu$ m	1-790112-300
5 cm x 4.6 mm	5 $\mu$ m	1-790103-300
10 cm x 4.6 mm	5 $\mu$ m	1-790102-300
15 cm x 4.6 mm	5 $\mu$ m	1-790104-300
25 cm x 4.6 mm	5 $\mu$ m	1-790101-300

Kits include one each of Whelk-O 1 (order must specify preference of S,S or R,R), RegisPack, and RegisCell chiral columns.

\*Whelk-O 1 is available in 3.5 $\mu$ m.

## CHIOSIL<sup>®</sup> & CHIOSIL ME

(+) or (-)-(18-Crown-6)-tetracarboxylic acid

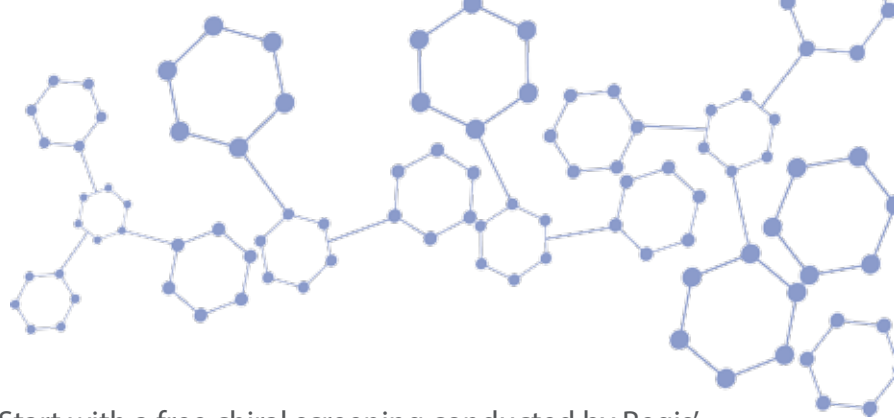


- Best choice for the separation of amino acids and compounds containing primary amines
- Exhibits excellent durability due to covalent bonding
- Columns available in both enantiomeric forms, which allows for the inversion of peak elution order
- Most robust crown ether column for HPLC

Visit [chiral.com](http://chiral.com) for ordering information.

# CHIRAL

## Stationary Phases



### Free Chiral Screening

Let us find the best column for your compound. Start with a free chiral screening conducted by Regis' experts in chiral separations. Contact us to get started today!

## MOST POPULAR REGIS CHIRAL PHASES AND COLUMN DIMENSIONS

PARTICLE SIZE	COLUMN DIMENSIONS	(S,S) WHELK-O® 1 CATALOG #	(R,R) WHELK-O® 1 CATALOG #	REGISPACK™ CATALOG #	REGISCELL™ CATALOG #	REGISPACK™ CLA-1 CATALOG #
1.8 µm	5 cm x 2.1 mm	1-780163-300	1-780263-300	N/A	N/A	N/A
	5 cm x 3.0 mm	1-780165-300	1-780265-300	N/A	N/A	N/A
	5 cm x 4.6 mm	1-780162-300	1-780262-300	N/A	N/A	N/A
	10 cm x 2.1 mm	1-780164-300	1-780264-300	N/A	N/A	N/A
	10 cm x 3.0 mm	1-780166-300	1-780266-300	N/A	N/A	N/A
	10 cm x 4.6 mm	1-780161-300	1-780261-300	N/A	N/A	N/A
3 µm*	5 cm x 4.6 mm	1-780120-300	1-780220-300	1-783507-300	1-784507-300	1-793507-300
	10 cm x 4.6 mm	1-780121-300	1-780221-300	1-783502-300	1-784502-300	1-793502-300
	15 cm x 4.6 mm	1-780122-300	1-780222-300	1-783503-300	1-784503-300	1-793503-300
	25 cm x 4.6 mm	1-780123-300	1-780223-300	1-783504-300	1-784504-300	1-793504-300
5 µm	5 cm x 4.6 mm	1-780152-300	1-780252-300	1-783101-300	1-784101-300	1-793101-300
	10 cm x 4.6 mm	1-780151-300	1-780251-300	1-783102-300	1-784102-300	1-793102-300
	15 cm x 4.6 mm	1-780105-300	1-780205-300	1-783103-300	1-784103-300	1-793103-300
	25 cm x 4.6 mm	1-780101-300	1-780201-300	1-783104-300	1-784104-300	1-793104-300
10 µm	5 cm x 4.6 mm	1-786906-300	1-786907-300	1-783201-300	1-784201-300	1-793201-300
	10 cm x 4.6 mm	1-786908-300	1-786909-300	1-783202-300	1-784202-300	1-793202-300
	15 cm x 4.6 mm	1-786251-300	1-786252-300	1-783203-300	1-784203-300	1-793203-300
	25 cm x 4.6 mm	1-786615-300	1-786515-300	1-783204-300	1-784204-300	1-793204-300
16 µm	15 cm x 4.6 mm	1-786351-300	1-786361-300	N/A	N/A	N/A
20 µm	25 cm x 4.6 mm	1-781501-300**	1-781401-300**	1-783304-300	1-784304-300	1-793304-300

\*Whelk-O 1 packaged with 3.5µm particle size.

\*\*20µm Whelk-O 1 packaged with YMC silica. All other particle sizes packaged with Kromasil silica.

Contact Regis for additional CSPs, sizes, and a personalized quotation.



### ABOUT REGIS TECHNOLOGIES, INC.

Regis Technologies, Inc. is a privately held company that provides synthesis and separations services to the pharmaceutical, biotechnology and other related industries. Regis provides innovative chromatography products and services, especially those with a chiral emphasis, through the utilization of our extensive organic expertise and collegiate collaborations. For more information, please visit [www.registech.com](http://www.registech.com).

t 847.967.6000  
f 847.967.5876

[www.registech.com](http://www.registech.com)

[chromsales@registech.com](mailto:chromsales@registech.com)

8210 Austin Avenue  
Morton Grove, IL US 60053